



Feedback Committee

Report of

Feedback Analysis on Curriculum

(Student, Teacher, Employer and Alumni)

Academic Year: 2021-22

Submitted to

Internal Quality Assurance Cell

Feedback Analysis Report

Introduction and Objectives:

Indapur Arts, Science, and Commerce College, established in 1972 by the Indapur Taluka Shikshan Prasarak Mandal, is committed to the holistic development of students in the surrounding rural areas. The college aims to nurture future entrepreneurs and professionals by providing quality education.

To ensure continuous improvement, the college conducts an annual survey to gauge the satisfaction of key stakeholders: students, teachers, employers, and alumni. These stakeholders are crucial in evaluating the college's curriculum and overall performance. Their feedback plays a vital role in shaping the institution's future.

Methodology

The survey is conducted online, with the feedback form accessible through the college website and shared via WhatsApp groups. Participation is voluntary.

For the academic year 2021-22, approximately 300 students, 20 alumni, 30 teachers, and 10 employers responded to the survey. The analysis presented in this report is based on these responses.

Potential Impact of Stakeholder Feedback

The insights gained from the survey can significantly influence the college's operations and future planning. Here are some key areas of impact:

Curriculum Improvement

Industry Alignment: Feedback from employers can help identify gaps between the curriculum and industry requirements, enabling the college to make necessary adjustments to ensure graduates are well-prepared for the workforce.

Student-Centric Learning: Input from students can provide valuable insights into their learning experiences, helping the college to refine teaching methods and curriculum content to better meet their needs.

Enhanced Teaching and Learning

Teacher Effectiveness: Feedback from students and alumni can help assess the effectiveness of teachers and identify areas for professional development, leading to improved teaching practices.

Innovative Pedagogy: The survey can provide insights into the effectiveness of teaching methods, enabling teachers to adopt more innovative and engaging approaches that enhance student learning.

Strategic Planning

Long-Term Vision: Feedback from all stakeholders can help the college develop a long-term vision and strategic plan that aligns with the evolving needs of the students and the job market.



Resource Allocation: The survey can help identify areas where additional resources may be needed, such as faculty, infrastructure, or technology, to support the college's goals.

By actively seeking and incorporating stakeholder feedback, Indapur Arts, Science, and Commerce College demonstrates its commitment to continuous improvement and its dedication to providing a high-quality education that empowers students to succeed.

Design of Feedback

The responses from the students were collected on the five-point scale

4 – Above 90%

3 – 70 – 89%

2 – 50 – 69%

1 – 30 – 49%

0 – Below 29%

And the responses from the teachers, alumni and employers were collected on the three-point scale.

1. Yes

2. No

3. Can't decide

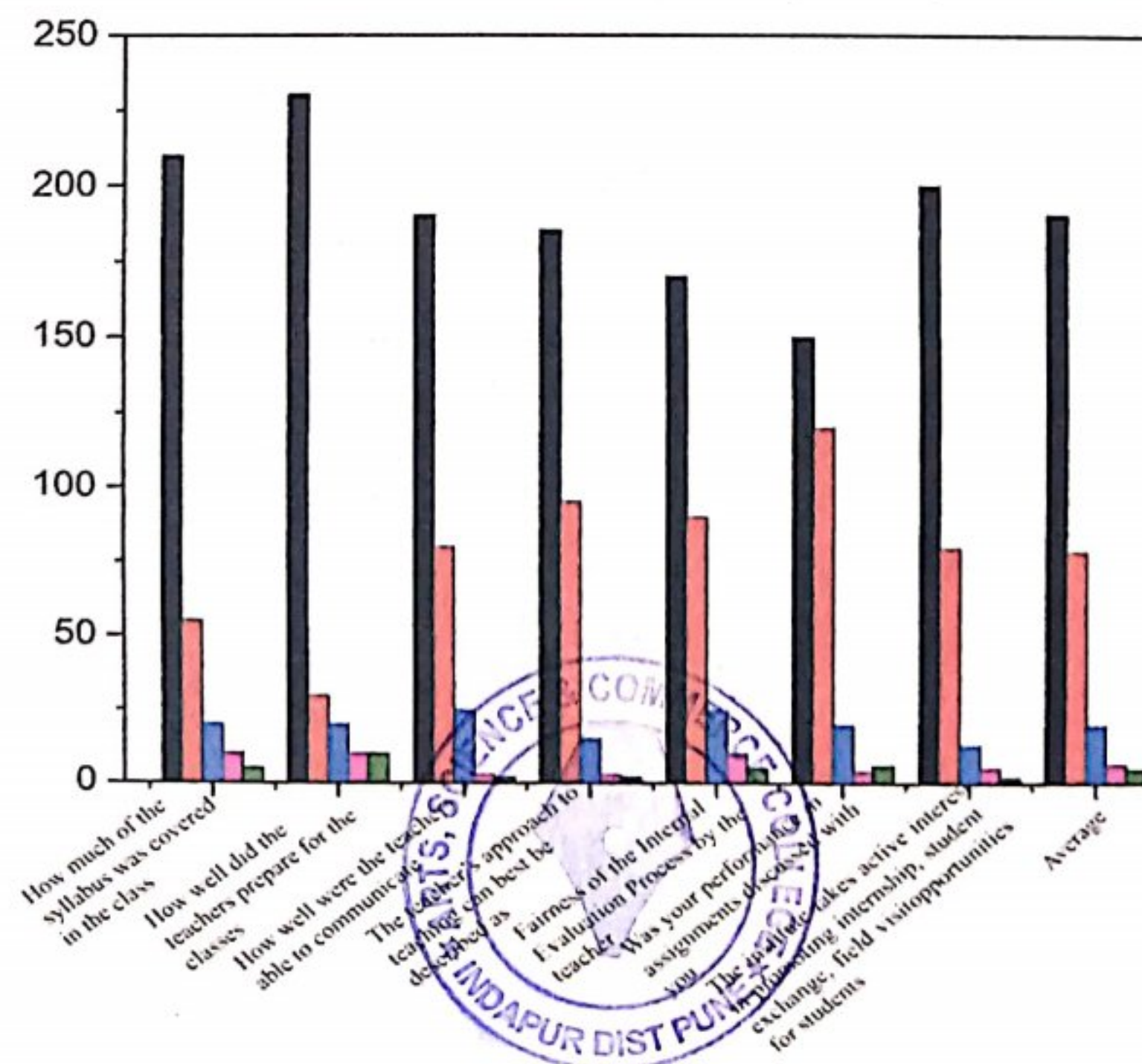
Overall Evaluation

Feedback was collected and analyzed by Feedback Committee of the college. Opinion of all the stakeholders is obtained about each parameter in percentage.

Student Feedback

Savitribai Phule Pune University conducted a survey to gauge student satisfaction with various aspects of their academic experience. A total of 300 students, comprising 140 females and 160 males, participated in the survey, providing valuable insights into the university's strengths and areas for improvement.

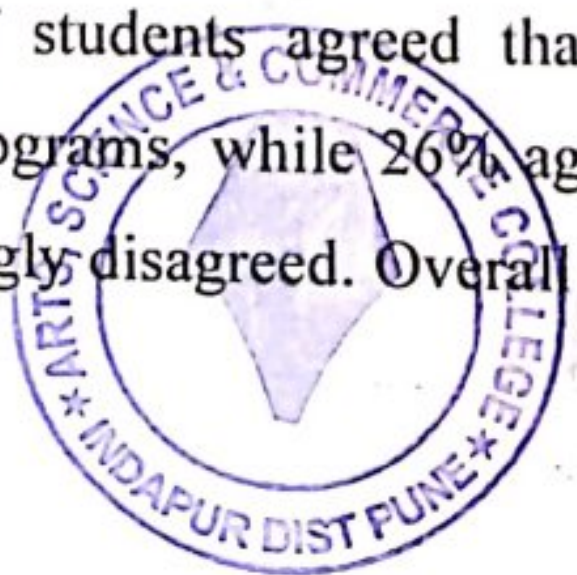
Following chart and table shows the summary of the responses given by students for each parameter.

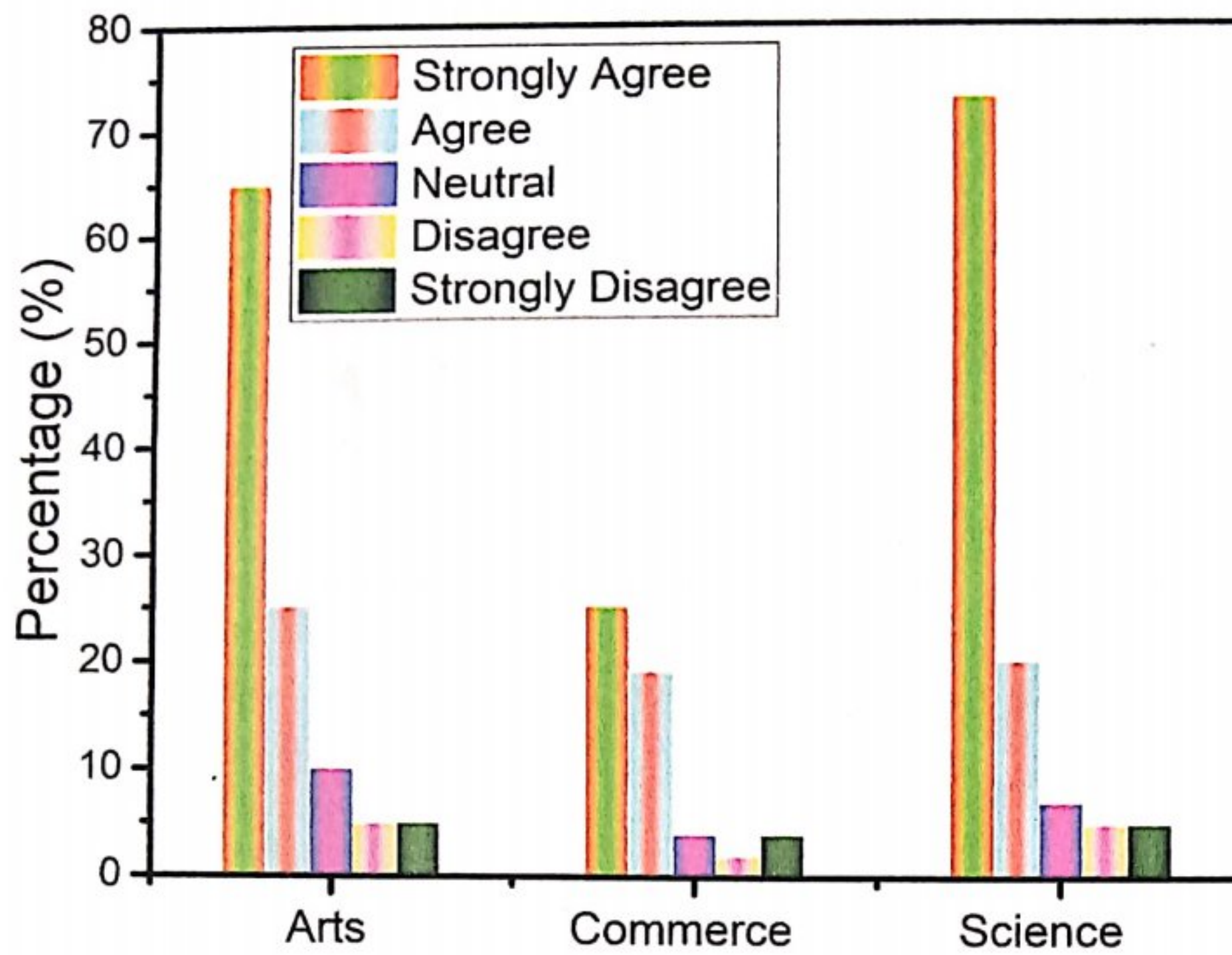


	Strongly Agree	Agree	Neutral	Disagree	Strongly Disagree
How much of the syllabus was covered in the class	210	55	20	10	5
How well did the teachers prepare for the classes	230	30	20	10	10
How well were the teachers able to communicate	190	80	25	3	2
The teacher's approach to teaching can best be described as	185	95	15	3	2
Fairness of the Internal Evaluation Process by the teacher	170	90	25	10	5
Was your performance in assignments discussed with you	150	120	20	4	6
The institute takes active interest in promoting internship, student exchange, field visit opportunities for students	200	80	13	5	2
Average	190.7	78.57	19.71	6.42	4.57

A significant majority of students, 70%, strongly agreed that the entire syllabus was covered, while 18.3% agreed. A smaller portion, 6.6%, remained neutral, and 5% either disagreed or strongly disagreed. Regarding teacher preparation, 76.6% strongly agreed and 10% agreed. A similar number, 6.6%, were neutral, while 3.3% disagreed and 3.3% strongly disagreed. When it came to teacher-student communication, 63.3% strongly agreed and 26.6% agreed. Around 5% were neutral, and 1.5% disagreed or strongly disagreed.

Most students, 61.6%, strongly appreciated the teachers' skills, and 31.6% agreed. A small percentage, 5%, were undecided, while 1.6% disagreed or strongly disagreed. Regarding internal evaluations, 56.6% strongly agreed and 30% agreed that they were fair. Approximately 8.3% were neutral, 3.3% disagreed, and 1.7% strongly disagreed. Similarly, 50% strongly agreed and 40% agreed that assignment evaluations were fair. Around 6.6% were neutral, 1.3% disagreed, and 2% strongly disagreed. Finally, 66.6% of students agreed that the institute actively promotes internships, field visits, and exchange programs, while 26% agreed. A smaller percentage, 4.3%, were neutral, and 2.3% disagreed or strongly disagreed. Overall feedback for each evaluation point is more than the average value (4.2).



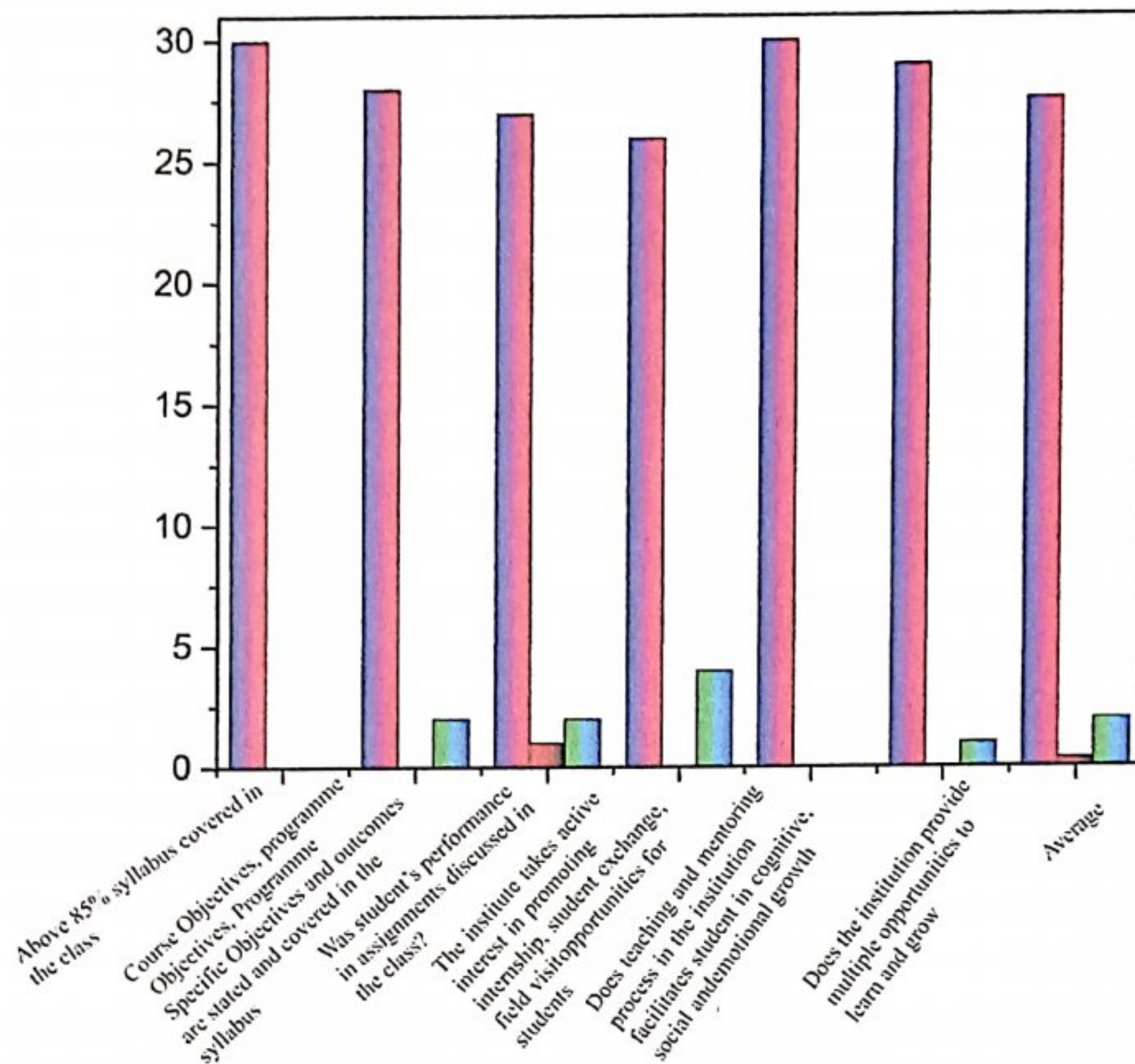


Most of the students (80% arts, 93% commerce, 95% science) strongly agree with the current curriculum of the graduation. There are no students who oppose current syllabus. There are also some students (2% arts and 2% Science) who choose to remain neutral.



Teacher's Feedback

A recent survey of 30 faculty members at Savitribai Phule Pune University has yielded valuable insights into the effectiveness of various academic programs. The survey, which included 20 male and 10 female respondents, focused on key aspects of the curriculum and academic experience.



Positive Feedback

A significant majority of faculty members expressed satisfaction with the current curriculum, particularly regarding syllabus coverage and alignment with program objectives. Nearly all respondents indicated that they had successfully covered the entire syllabus for the academic year. Additionally, approximately 93% of faculty members agreed that the course, program, and specific objectives, as well as the expected outcomes, were clearly outlined and incorporated into the syllabus.

Furthermore, the faculty members were generally pleased with student performance and engagement. Around 90% of respondents expressed confidence in their students' abilities to grasp course concepts and actively participate in classroom discussions. The institution's commitment to fostering holistic student development was also recognized, with 100% of faculty members affirming that the teaching and mentoring processes effectively supported students' cognitive, social, and emotional growth.

The university's efforts to provide opportunities for experiential learning were also



appreciated. A substantial 86.6% of faculty members acknowledged the institution's active role in promoting internships, student exchange programs, and field visits. This positive sentiment underscores the importance of practical experiences in complementing theoretical knowledge.

Sr. No	Particulars	Yes	No	Can't Decide
1	Above 85% syllabus covered in the class	30	0	0
2	Course Objectives, programme Objectives, Programme Specific Objectives and outcomes are stated and covered in the syllabus	28	0	2
3	Was student's performance in assignments discussed in the class?	27	1	2
4	The institute takes active interest in promoting internship, student exchange, field visit opportunities for students	26	0	4
5	Does teaching and mentoring process in the institution facilitates student in cognitive, social and emotional growth	30	0	0
6	Does the institution provide multiple opportunities to learn and grow	29	0	1
	Average	27.6	0.3	2

Areas for Improvement

While the overall feedback is encouraging, there are a few areas where improvements can be considered. A small percentage of faculty members (10 %) expressed uncertainty regarding student performance, highlighting the need for further exploration of factors that may influence student engagement and achievement.

Additionally, 13% of respondents were undecided about the institution's commitment to experiential learning opportunities. While the university has made significant strides in this area, there is potential to further enhance the quality and accessibility of such programs.

Recommendations

To build upon the strengths identified in the survey and address the areas for improvement, the following recommendations are proposed:

Enhance Communication: Foster open and effective communication channels between faculty and students to strengthen the learning experience and address any concerns promptly.

Strengthen Experiential Learning: Invest in expanding internship, student exchange, and field

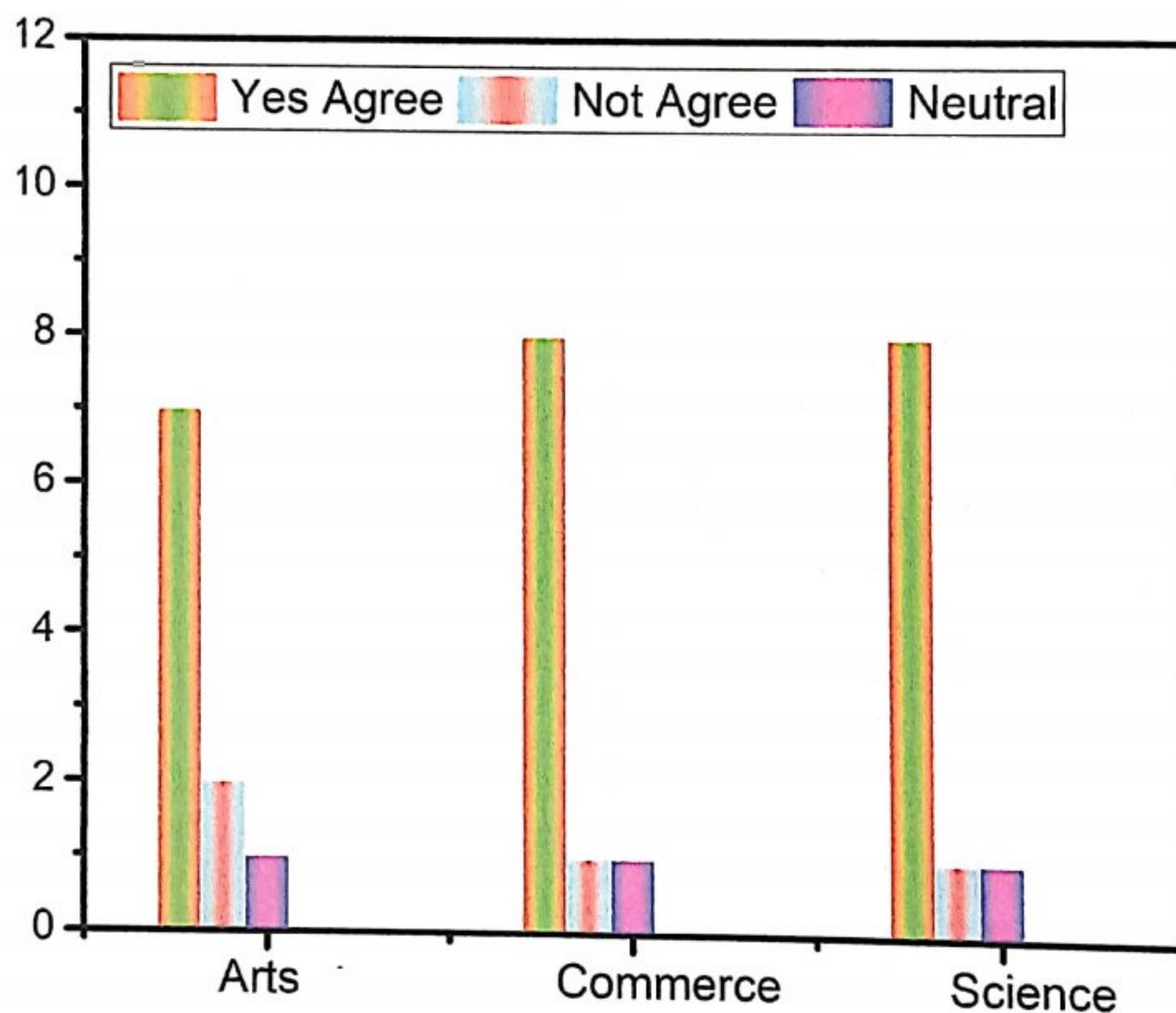
visit programs to provide students with diverse opportunities to apply their knowledge and skills in real-world settings.

Regular Curriculum Review: Establish a regular review process for the curriculum to ensure its relevance and alignment with evolving industry needs and student expectations.

Faculty Development: Provide ongoing professional development opportunities for faculty members to enhance their teaching methodologies and stay updated on emerging trends in higher education.

Student Feedback Mechanisms: Implement effective mechanisms for gathering and analyzing student feedback to inform curriculum improvements and enhance the overall learning experience.

By implementing these recommendations, Savitribai Phule Pune University can continue to provide high-quality education and foster a vibrant learning environment for its students. Most of the time overall feedback for evaluation point is more than the average value (4.2)



Most of the teachers agree with the current curriculum of the graduation and post-graduation level. There is only 2% of commerce and 2% from arts faculty members who cannot decide about the current syllabus.



Alumni Feedback

Savitribai Phule Pune University received feedback from 20 alumni on its various program syllabi.

Of the respondents, 15 were male, and 5 were female.

A significant majority (75%) of alumni found the current syllabus suitable for overall student development. However, 5% disagreed, and 20% were undecided. Similarly, 80% believed the syllabus fostered global competence, while 10% disagreed and 10% were neutral.

Sr. No	Particulars	Yes	No	Can't Decide
1	Curriculum design is suitable for meeting the overall development of students	15	1	4
2	Curriculum develops the global competence of students	16	2	2
3	Curriculum is suitable for employability in present scenario	14	2	4
4	Curriculum design is value based	20	0	0
5	Curriculum is based on Regional/National needs	15	2	3
6	Satisfied about current syllabus	18	0	2
7	Is the action plans for effective implementation of the curriculum satisfactory	12	2	6
8	Average	15.7	1.28	3

Regarding employability, 70% of alumni were satisfied, 10% disagreed, and 20% were uncertain. All respondents agreed that the syllabus was value-based.

Furthermore, 75% found the syllabus aligned with regional and national needs, while 10% disagreed and 15% were unsure. Overall, 90% of alumni were satisfied with the syllabus, with 10% remaining undecided. The action plan for implementing the curriculum was deemed satisfactory by 60% of alumni, while 10% disagreed and 30% were unsure.

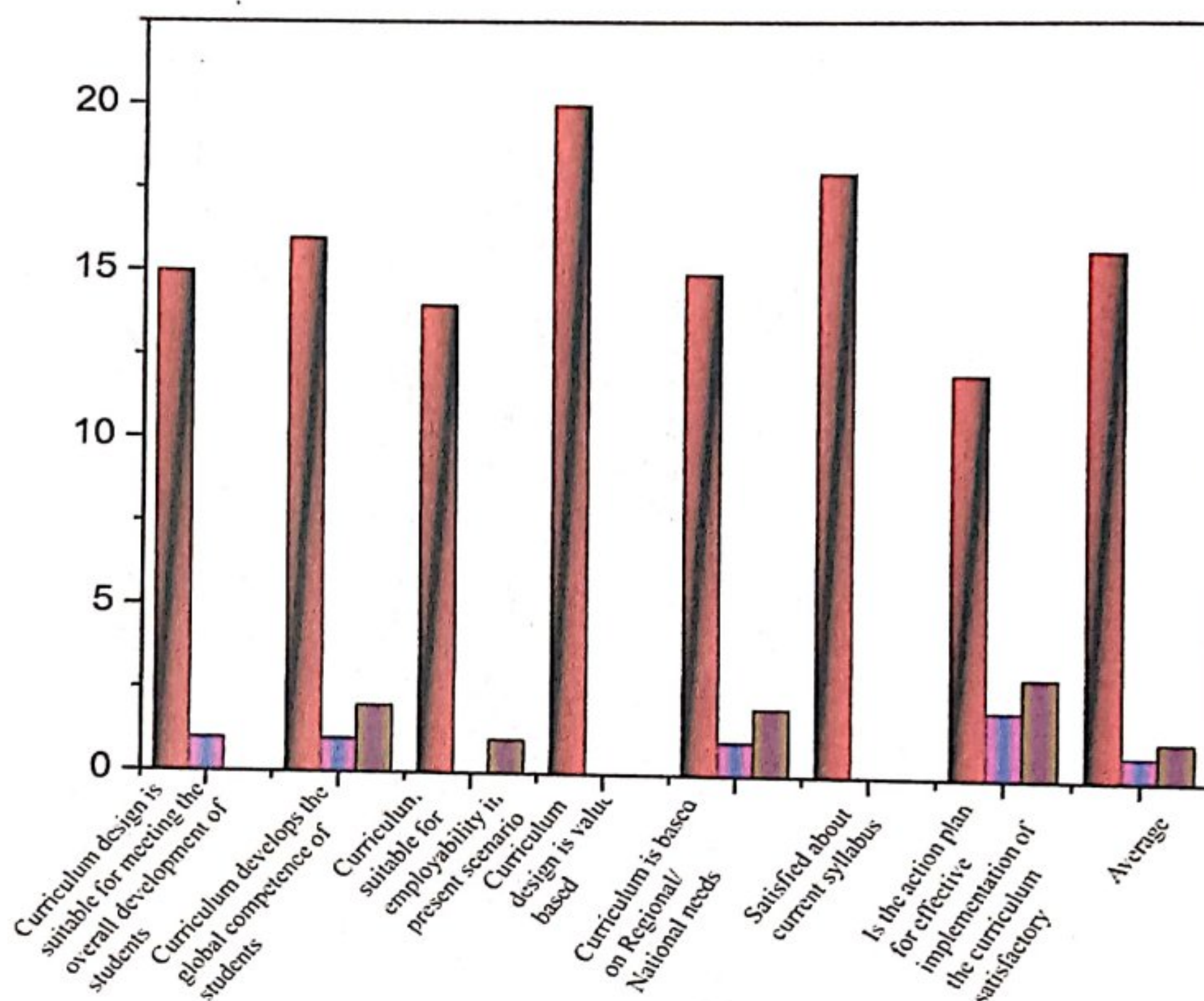
In conclusion, most alumni were satisfied with the current syllabus. However, there were varying opinions on its alignment with regional/national needs and the effectiveness of the implementation plan. Regarding employability, 70% of alumni were satisfied, 10% disagreed, and 20% were uncertain. All respondents agreed that the syllabus was value-based.



Furthermore, 75% found the syllabus aligned with regional and national needs, while 10% disagreed and 15% were unsure. Overall, 90% of alumni were satisfied with the syllabus, with 10% remaining undecided.

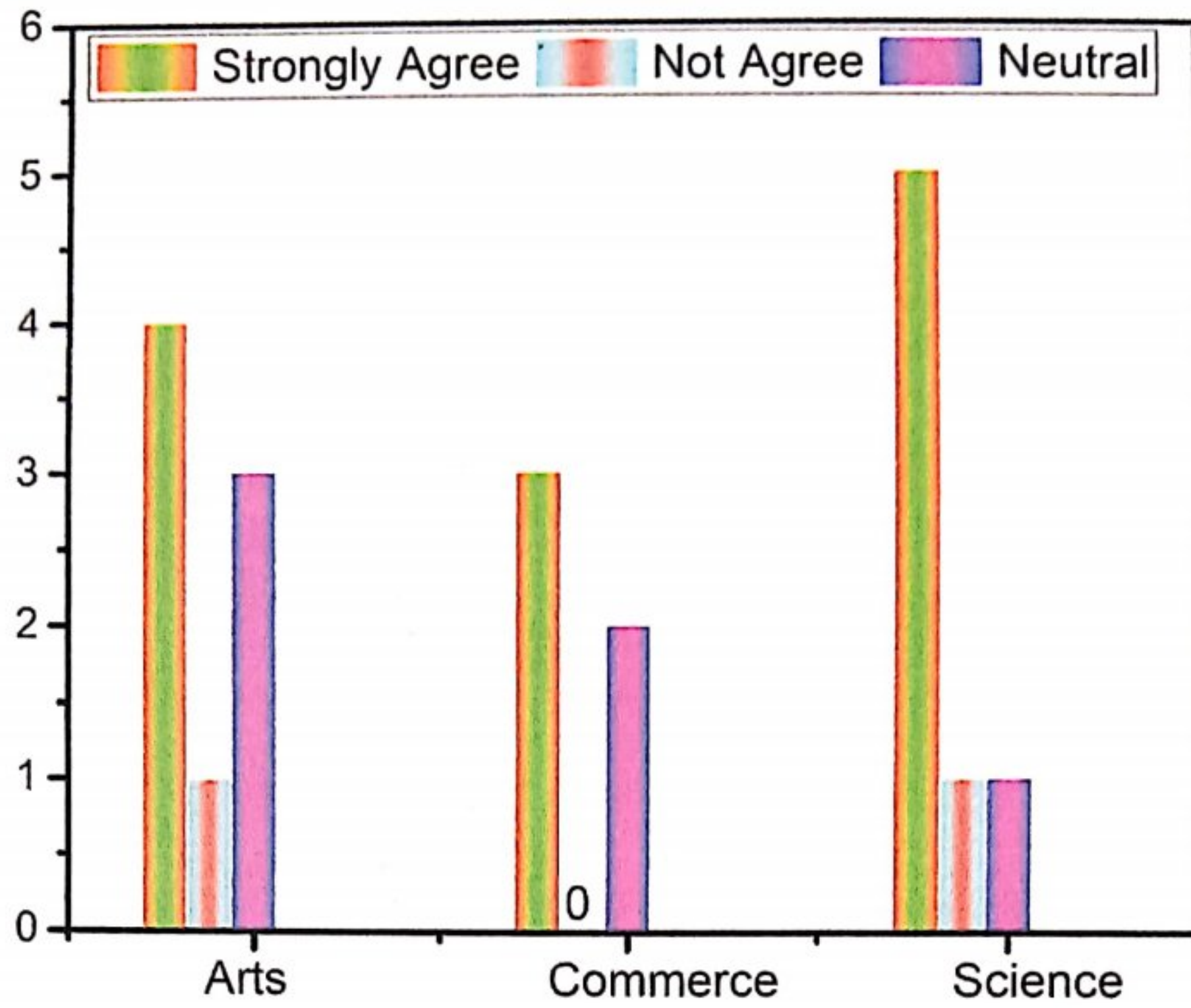
The action plan for implementing the curriculum was deemed satisfactory by 60% of alumni, while 10% disagreed and 30% were unsure.

In conclusion, most alumni were satisfied with the current syllabus. However, there were varying opinions on its alignment with regional/national needs and the effectiveness of the implementation plan.



Overall feedback for each evaluation point is above the average value (4.2) except parameter fifth and seventh.





Most of the alumni who did their graduation from arts and commerce and science faculty (85 %, 90 %, 70 %) completely agree with the current syllabus adopted by institution, whereas some of the alumnus 6% from arts, 15% from commerce and 10% from science stream do not agree with it.



Employers Feedback

Savitribai Phule Pune University received feedback from 10 employers on various program syllabi. The summary of responses, presented in percentages, reveals a generally positive employer sentiment.

Sr. No	Particulars	Yes	No	Can't Decide
1	What do you think, do we provide academic excellence	8	1	1
2	Do you think that the size of classes affects the quality of the education	9	0	1
3	Is provided life skills training sufficient	9	0	1
4	Curriculum help in developing personality	9	1	0
5	Overall, is our college's educational program of high quality	8	1	1
6	Is curriculum helps in getting adequate knowledge	8	0	2
7	Average	8.5	0.5	1

A significant majority (80%) of employers agree that the university excels in student education. However, 10% disagree, and another 10% are undecided.

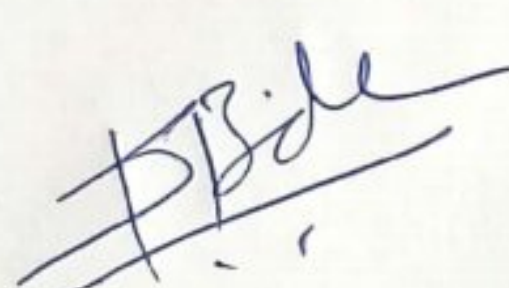
Nearly 90% of employers believe class size negatively impacts education quality, with the remaining 10% unsure. A strong 90% of employers are satisfied with the life skills training, while 10% are undecided. Similarly, 90% of employers agree the curriculum fosters personality development, while 10% disagree. Regarding overall education quality, 80% of employers are satisfied, with 10% disagreeing and 10% undecided.

Finally, 80% of employers believe the curriculum provides adequate knowledge, with 20% unsure. In conclusion, most employers are satisfied with the current syllabus. However, there are areas where improvements can be considered, such as reducing class sizes and refining the curriculum to better align with industry needs and enhance personality development.

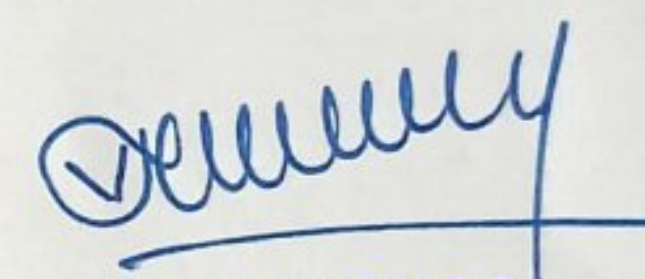


Following are the suggestions received from the stakeholders;

1. Arrange workshops regarding revised curriculum.
2. Expand the research activities in the college for students.
3. Pay more attentions towards the placement of the students.
4. Introduce more skill-oriented courses in curriculum to the students.
5. Improve the library facilities in the institute.
6. Improve cleanliness and hygienic conditions in the college


Coordinator, IQAC
Arts, Science & Commerce
College, Indapur, Dist-Pune




PRINCIPAL
ARTS, SCIENCE AND
COMMERCE COLLEGE
INDAPUR-413106 DIST-PUNE



Action Taken Report – 2021-22

Following the valuable suggestions received last year, we implemented microscale techniques for organic compound analysis. This innovative approach significantly reduced chemical waste and experimental time.

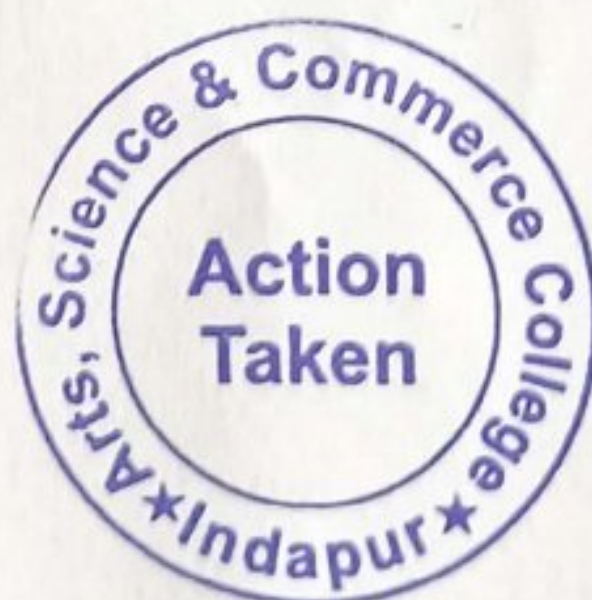
This Year's Feedback and Future Goals

To further enhance our academic offerings, we gathered feedback from stakeholders in 2021-22. Key suggestions included:

- **Enriching Student Life:** Organizing diverse sports events to promote holistic development.
- **Industry-Relevant Education:** Integrating more industrial instrument concepts into graduate-level physics and chemistry curricula.
- **Improving Learning Experiences:** Addressing concerns about concept clarity and considering faculty changes where necessary.

We are committed to carefully analyzing these inputs and taking appropriate actions to improve our programs.

Coordinator, IQAC
Arts, Science & Commerce
College, Indapur, Dist-Pune



PRINCIPAL
ARTS, SCIENCE AND
COMMERCE COLLEGE
INDAPUR-413106 DIST-PUNE